

60% REDUCTION IN ELECTRICITY CONSUMPTION & COSTS of PCs

For no good reason, most computers are left powered-on during non-working hours, resulting in a significant waste of energy. Because of the rapid rise in energy prices and an increasing environmental legislation, organizations like yours are seeking new and innovative solutions to a more efficient power consumption. PretonPower™ solves the problem by shutting down computers when they are not in use – at night, during weekends and even during the day - without interrupting your business processes.



Current Year ROI

PretonPower's, advanced computer power management software solution, enables you to manage and control energy consumption in order to reduce both your overall electricity costs and CO2 emissions across your organization's LANs and WANs.

Your return-on-investment will be immediate and substantial as you dramatically reduce your power expenses, however for your employees it will be business as usual.



Deploying PretonPower required very little effort on our part. Since we began using the software a few months ago, we have already saved thousands of Kwh per month.



Yariv Eytan
CIO | LGEC



Flexible Energy Saving Policies

The centralized PretonPower energy management console enables you to establish and manage power policies across the organization. PretonPower's individual and group behavior models seamlessly integrate into the system without interrupting work or ICT performance. With PretonPower you can remotely control PCs and choose between hibernate, sleep and shut down modes.



PretonPower + PretonSaver = Best Savings

PretonPower and our ink and toner-saving software, PretonSaver™, are fully integrated for optimum results. With a single administration interface, you can define usage policies for both computers and printers. Using Preton's combined software applications can extend your savings by up to \$110 per employee, per month.

DID YOU KNOW?

- Computers use 60% of their maximum power while in idle mode and typically run at just 15% utilization.
- When a PC is idle, 60% of the system's power consumption is used by the display screen, while the other 40% is used to keep your hard drive spinning and power the electronics.
- More than 90% of the time, PCs are powered on, without actual client Need.
- PretonPower not only saves on power during evenings and weekends, but also reduces carbon footprints.



Convenient Wake-Up Function

PretonPower offers several advanced wake-up features for computers in a low power state, including on demand or scheduled options when the computer stays powered off or in sleep/hibernate mode until a specified wake-up policy is activated. PretonPower also supports on demand functionality for a specific computer and a convenient remote wake-on-web option.

Features

- Open and flexible power management policies
- Multiple same day options
- User "Self-PC" energy management
- Granularity down to single machine level
- Groups of machines or an individual machine are automatically synced with your Active Display
- Highly sensitive to your user's needs
- Open files and unsaved data prompt display
- Wide range of wake up options
- Automatic and scheduled
- On demand
- Wake-on-LAN
- Wake-on-web – individual, web-based access for users who need to start their computers from remote locations
- Supports for Intel AMT
- Enterprise-ready
- Supports tens of thousands of computers from a single console
- Detailed and easy-to-read reports
- Customized solution
- Enterprise view dashboards
- Personalized electricity tariffs
- Flexible energy-saving policy modules
- Simple setup and configuration

Benefits

- Save more than 60% on your computers' electricity bill
- Centralized, 24/7, PC ecosystem power management
- Reduce CO2 emissions
- Value-added saving option
- Fully-integrated with PretonSaver, Preton's toner and ink saver software

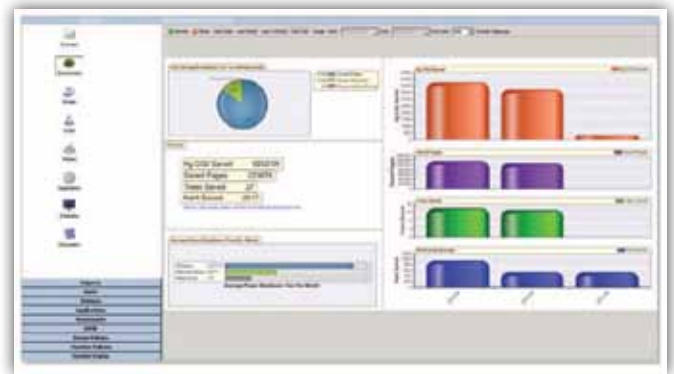
System Requirements

PretonPower Server (32-bit or 64-bit)

- Microsoft Windows Server 2008
- Microsoft Windows Server 2003 SP2 or later
- .NET Framework 2.0 or later

PretonPower Client (32-bit or 64-bit)

- Microsoft Windows 7
- Microsoft Windows Vista SP1 or later
- Microsoft Windows XP SP2 or later
- Microsoft Windows 2000 SP4 (32-bit only)
- .NET Framework 2.0 or later



Environmental Sustainability

Carbon Dioxide (CO₂) is known for producing greenhouse gases that cause global warming. Leaving your computer powered on all the time adds approximately 10kg of CO₂ to your organization's carbon footprint – equivalent to driving 60 kilometers in a medium-sized car.

An ordinary PC consumes 535 to 550 kWh of electricity a year, out of which Two-Thirds is wasted while your computer is in active mode.

With PretonPower, you can enforce power management policies and reduce energy costs to lower your carbon footprint and help save the environment.



Contact Preton

© Copyright 2012, Preton Ltd. All rights reserved. Preton, PretonSaver and PretonPower are trademarks of Preton Ltd. All other product or company names may be trademarks or registered trademarks of their respective owners.

7 Levi Yitzchak Street, Tel Aviv, Israel | Tel +972 3 522 1686 | Fax +972 3 529 9122 | www.preton.com | info@preton.com